



ABOUT THE COMPANY

POWERING ROADS. BUILDING FUTURES.

MANUFACTURING, SUPPLYING, SOLUTIONS & SERVICES!

Bitu Way & Infrastructure LLP is a road and infrastructure materials company focused on consistent quality, practical engineering support, and reliable delivery. We work with **contractors, government agencies, and industrial clients** to supply bitumen products and emulsions for new construction as well as ongoing maintenance. Alongside road materials, we provide dust suppression solutions designed for mining haul roads and high-traffic work zones, helping reduce airborne dust while improving safety and site compliance.

Backed by a team with **10+ years of on-ground industry experience**, we understand real site challenges and recommend the right grade, application method, and supply plan. With pan-India reach and a service-first approach, we aim to keep projects moving smoothly from planning to execution.

Vision To be India's most trusted partner for durable road-building materials and responsible dust control—helping projects run safer, cleaner, and on schedule nationwide.

Mission To provide reliable products and practical on-ground support for roads, mines, quarries, and construction sites by combining quality-controlled materials, tailored recommendations, and dependable pan-India supply that customers can plan around.

INDUSTRIES WE SUPPORT:

- Road and highway contractors (new works and renewals)
- Government and public sector projects
- Mining and minerals operations
- Industrial plants, logistics yards, and heavy-traffic premises

DUST SUPPRESSION

**For safety,
savings and
sustainability,
we have the
solution.**

IMPLEMENTATION & APPLICATION SUPPORT

We do not just supply dust suppression products, we help you apply them correctly so you get consistent control, not temporary relief. Our team supports product selection, application planning, and day-to-day execution using practical methods that fit your site operations:

- **Right product for the dust source:** haul roads, access routes, stockpiles, yards, and high-traffic zones
- **Equipment compatibility:** guidance for tanker spraying, water carts, sprinklers, and available site set-ups
- **Mixing and dosing clarity:** simple, practical dilution/dosing guidance (where required) so teams avoid overuse or underuse
- **Coverage and timing:** when to spray, how much area to cover per load, and how to avoid missed patches
- **Surface behaviour checks:** support to handle issues like re-dusting, soft spots, runoff, or uneven binding
- **Maintenance rhythm:** frequency planning based on traffic, wind, and dry spells to keep performance steady

When dust starts rising on haul roads, access routes, or material yards, it quickly becomes more than a nuisance, it slows movement, reduces visibility, increases wear on equipment, triggers complaints, and puts safety and compliance at risk.

Bitu Way & Infrastructure LLP helps you control dust with site-specific solutions designed around your traffic load, material type, weather, and water availability. The goal is simple: keep your operations moving smoothly, protect workers and nearby communities, and maintain cleaner, safer worksites without constant rework or disruption.

OUR PROVEN DUST SUPPRESSION SOLUTIONS AND ON-SITE SUPPORT ARE DESIGNED TO HELP WORKSITES BECOME:

- Safer and healthier for workers and nearby communities
- More productive with smoother day-to-day operations
- More cost-effective through smarter control methods
- More environmentally responsible with reduced dust impact



Advantages

With effective dust suppression in place, you get safer site movement through improved visibility and more predictable vehicle handling, while productivity increases because teams face fewer slowdowns caused by heavy dust and poor sightlines. You also reduce operational strain as less dust settles on equipment and site assets, improve day-to-day working conditions by lowering airborne dust exposure for operators and crews, and strengthen compliance readiness by supporting EHS discipline and audit preparedness.

Dust suppression (Mining in haul roads)

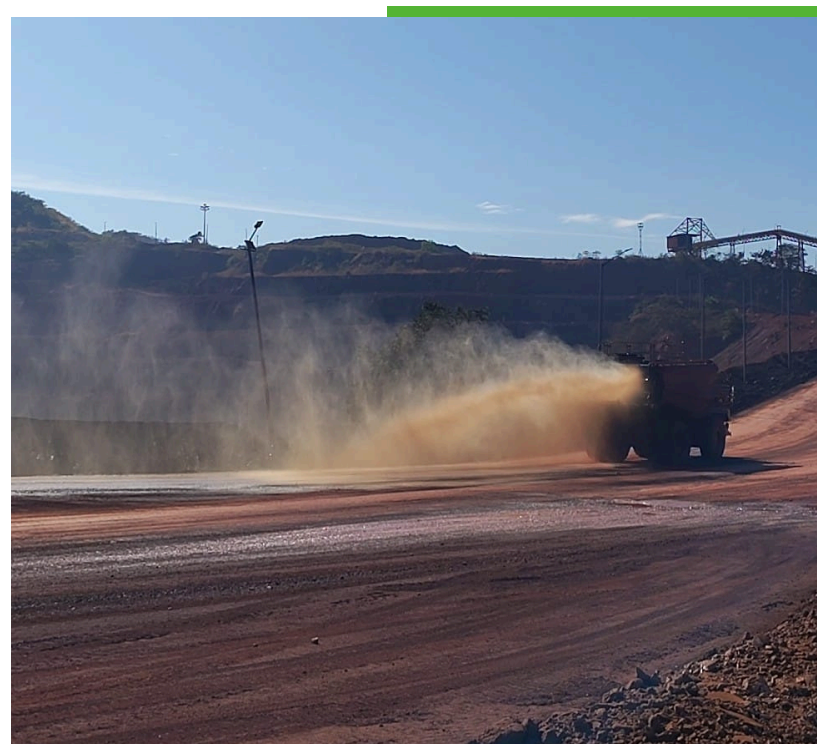
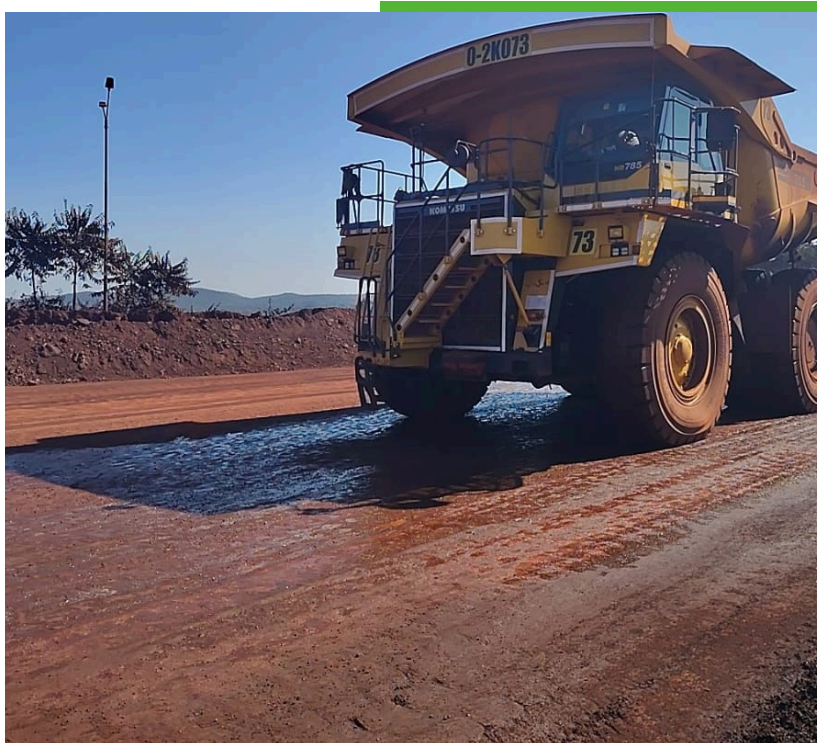
WHY DUST REDUCTION IS IMPORTANT:

- Improves visibility & road safety
- Reduces air pollution (PM10 / PM2.5)
- Protects workers' health
- Prevents material loss
- Lowers vehicle maintenance costs
- Helps meet environmental compliance

PROVEN OUTCOMES:

- Dust reduction of 90%+ in suitable site conditions
- Water savings of up to 95% where water-only spraying is reduced
- Safer, cleaner working environments
- Cost efficiencies through reduced rework and smoother operations

OUR WORK



ROAD MARKINGS

**For safer roads,
smoother traffic
flow, and long-
lasting visibility,
we have the road
marking solution.**

When roads carry mixed traffic, poor lane discipline, unclear turns, and faded markings quickly turn into near-misses, congestion, and accident risk, especially at junctions, crossings, curves, and work zones. Clear markings are one of the simplest ways to improve guidance and control without changing the road structure.

Bitu Way & Infrastructure LLP supports road marking requirements with a practical understanding of Indian traffic conditions and visibility challenges, helping plan markings that remain functional on busy stretches, plant premises, and newly built roads.

Where it is used: highways, city roads, industrial roads, junctions, crossings, parking areas, plant premises.

Key benefits: clearer guidance, safer merges and crossings, improved night-time navigation, better work zone control.

OUR WORK



MICROSURFACING

For stronger surfaces, better grip, and longer pavement life, we have the microsurfacing solution.

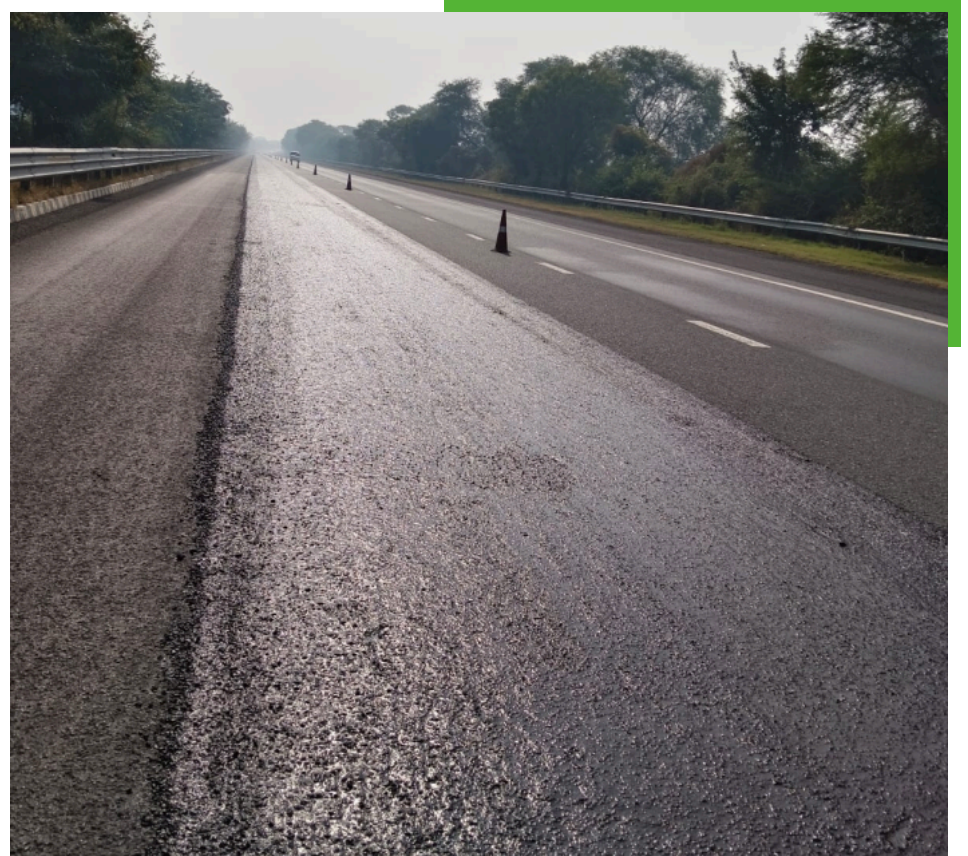
Many roads do not need full reconstruction, they need the right surface correction at the right time. When the top layer starts polishing, minor cracks appear, or skid resistance drops, delays in maintenance often lead to faster deterioration and higher repair costs. Microsurfacing is a preventive renewal method that restores grip, seals early surface defects, and improves ride quality with minimal traffic disruption.

Bitu Way & Infrastructure LLP supports microsurfacing through Microsurfacing Emulsion supply and practical execution guidance, helping contractors deliver a consistent, durable overlay that extends pavement life.

Where it is used: worn surfaces, early cracking, polished roads, minor rutting, high-traffic sections, urban stretches.

Key benefits: better grip, sealed surface, longer pavement life, faster completion than major resurfacing.

OUR WORK



PRODUCTS

We supply a complete range of road binders and emulsions used in construction, surface treatments, and maintenance works. Grades and availability can be aligned to project specifications.

Bitumen (VG Grades)

- Viscosity Grade (VG) Bitumen: VG-10, VG-20, VG-30, VG-40
- Consistent penetration and viscosity control for predictable paving performance
- Suitable for: bituminous concrete, DBM, BM and general paving works

Modified Bitumen

- PMB (Polymer Modified Bitumen) for improved rut resistance and elasticity
- CRMB (Crumb Rubber Modified Bitumen) for fatigue resistance and better thermal behaviour
- Recommended for: heavy traffic corridors, high temperature zones, and demanding performance conditions

Bitumen Emulsions

- Rapid Setting: RS-1, RS-2
- Medium Setting: MS
- Slow Setting: SS-1, SS-2
- Cationic: CSS-1
- Specialty: Micro-surfacing emulsion
- Typical uses: tack/prime coat, surface dressing, cold mixes, patch repairs, micro-surfacing
- Dust Suppression - Bituminous Product

Quality & Handling Guidance

- Quality checks aligned with standard industry test expectations
- Batch consistency focus and traceability mindset
- Safe storage and handling guidance to reduce wastage on site

SERVICES

Our service model is built to support both material supply and on-ground execution needs. From selecting the right product to site application support, we focus on outcomes, not just dispatch.

Dust Suppression Solutions

- Mining haul road dust suppression planning and support
- Product selection based on traffic load, surface type, moisture condition, and site constraints
- Application guidance (watering cycles, dilution, spray coverage) to reduce repeat runs
- Improves: visibility, tyre life, equipment maintenance, and worker safety

Supply & Logistics Support

- Pan-India dispatch planning with clear timelines and communication
- Packaging & movement options aligned to project needs (bulk / tanker / drums as applicable)
- Document support for billing and compliance requirements

Technical Support (Project-Aligned)

- Help choosing the right binder/emulsion for the job
- Basic site guidance on tack coat rates, surface readiness, and curing considerations
- Advice for common issues such as stripping, bleeding, or premature cracking through correct product selection and process discipline

Industrial Liquids (Supply)

- Industrial & fuel oils: LDO, FO, MTO (as per requirement and supply feasibility)
- Documentation support for dispatch, safe handling, and storage guidance



SOLUTIONS FOR EVERY INDUSTRY AND APPLICATION

We know dust control is never one-size-fits-all because every site operates differently. Before recommending any solution, we look at what material you handle and how it behaves, your site layout and traffic flow, local weather and wind, proximity to nearby communities, and how much water you can realistically access. This helps us deliver a site-specific plan that controls dust consistently in real operating conditions.

Build cleaner, safer, and more productive worksites with our support.

CONTACT US



www.bituway.com



info@bituway.com



+91 9915817140



R.K. Puram, Phase-6, Danapur-Khagaul Road, Patna,
Bihar 801503

